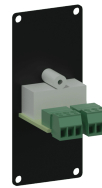
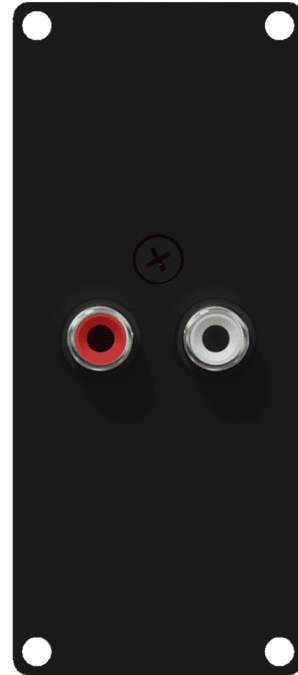


Highlights:

- 1.5 mm thick cold rolled steel frame
- Structured and scratch resistant black powder coating
- Assembly screws included
- Compatible with any CASY chassis
- Solderless connections
- Flexible system for system integration & connectivity

Product information:

The CASY132 is a CASY module with two female RCA/ cinch connectors on the front side of the module and a terminal block connector on the back. This flexible structure for system integration & connectivity can easily be implemented in a wide variety of CASY chassis.

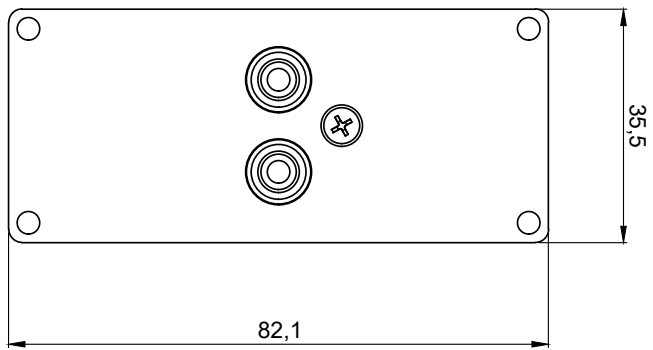



Product Features:

Dimensions	1.40 x 3.23 " (W x H)	
Weight	0.097 lb	
Connection	2 x RCA female to 3-pin terminal block	
Module	Space	1

Variants:

- CASY132/B - Black version



	CASY132	Product description: CASY 1 SPACE WITH 2 X RCA TO 2-PIN TB	Weight:	Outer dimensions: (w x h x d)	Unit height:
			44 g	35,5 x 82,1 x 47	2 HE